



# Striving Towards Consensus

---

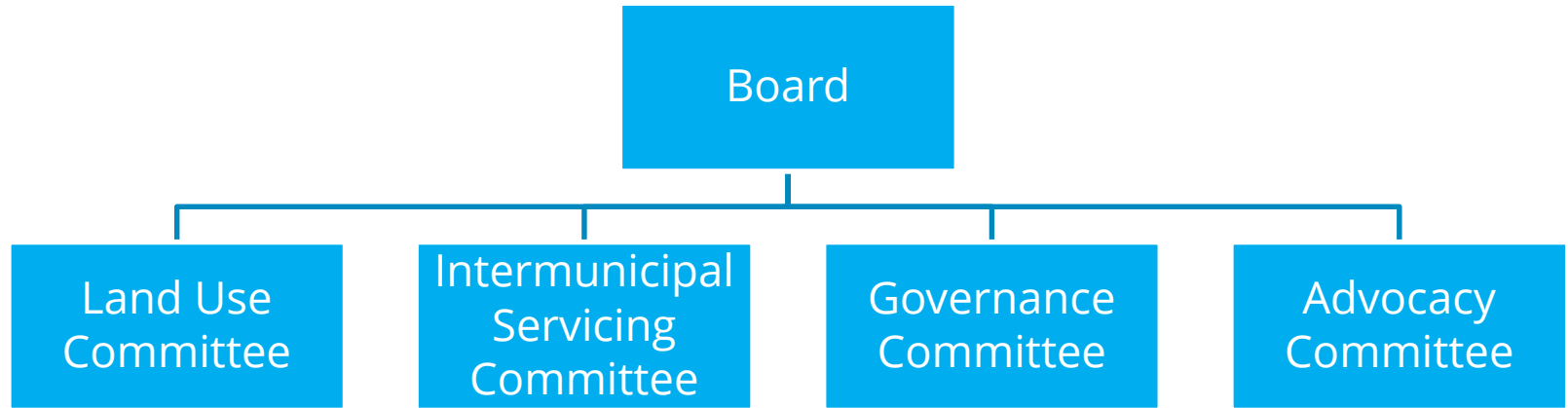
CPAA Conference

April 30, 2019





# Organization of the Board



# Mandate of the Board

- Strive towards consensus regarding matters before the Board,
- Promote the long term sustainability of the Calgary Metropolitan Region,
- Ensure environmentally responsible land-use planning, growth management and efficient use of land,
- Develop policies regarding the coordination of regional infrastructure investment and service delivery,
- Promote the economic well-being and competitiveness of the Calgary Metropolitan Region,
- Develop policies outlining how the Board shall engage the public on the Growth Plan and the Servicing Plan



# Interim Growth Plan and IREF

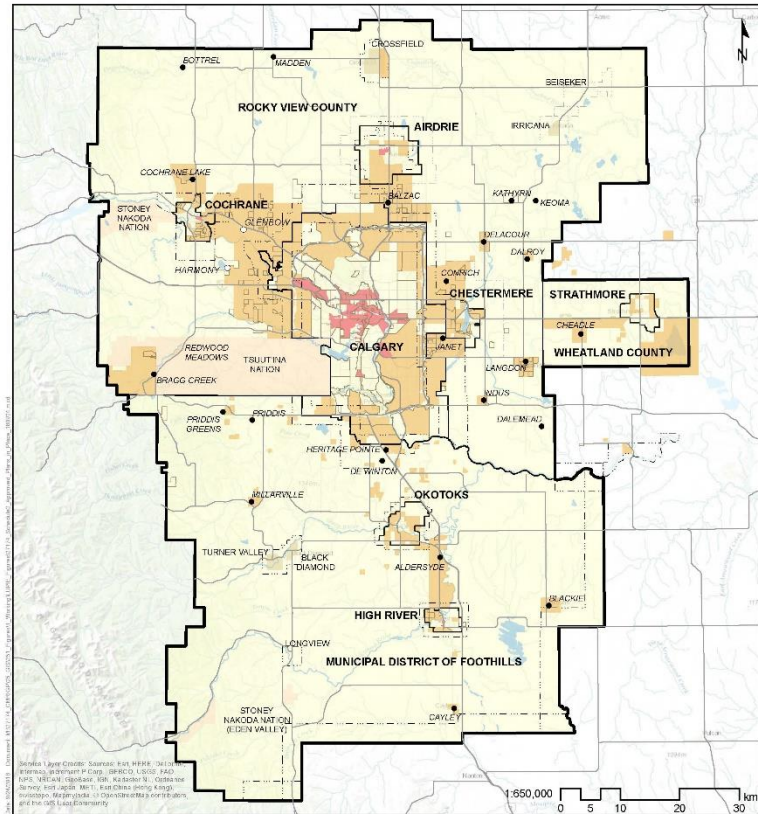
---

- Post January 1, 2018 all Statutory Plans must meet the Growth Plan
- IGP and IREF are a way to facilitate approvals in the interim period
  - Focus on collaboration
- Unanimously approved by the Board on October 4, approved by the Minister on December 13

CALGARY METROPOLITAN REGION BOARD

## Interim Growth Plan

October 4, 2018



Calgary Metropolitan Region  
Interim Growth Plan

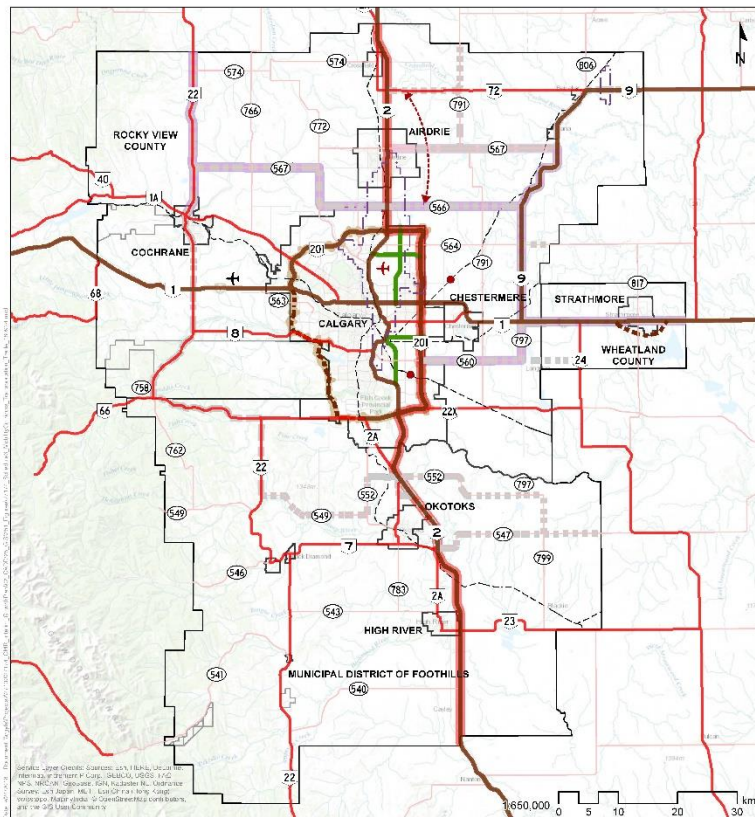


Current as of Sep-24/18

# Approved Land Uses In Place

Statutory Plans approved before January 1, 2018 are grandfathered





# Mobility Corridors – Transportation and Trade

Includes goods movement corridors  
Defined by regional significance rather than by type

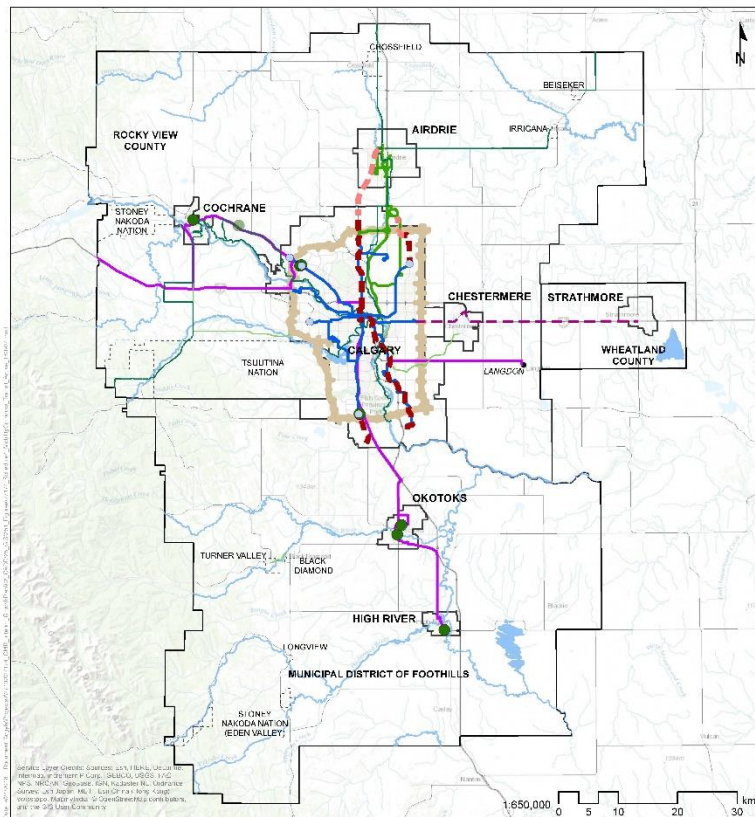
Calgary Metropolitan Region  
Interim Growth Plan



Calgary Metropolitan  
Region Board

Current as of Sep-24/18

PRESENTATION TO CPAA



- Park and Ride
- Future Park and Ride
- LRT Terminus Station
- Intermunicipal Connection
- Transportation Utility Corridor
- Active Transportation Corridors
  - The Great Trail †
  - Regional Pathway
- Higher Order Transit (HOT) Corridors
  - Existing HOT †
  - Planned HOT †
  - Potential Future HOT †
- Intermunicipal Transit Corridors
  - Public Intermunicipal Transit
  - Private Intermunicipal Transit
  - Future Intermunicipal Transit

Calgary Metropolitan Region  
Interim Growth Plan

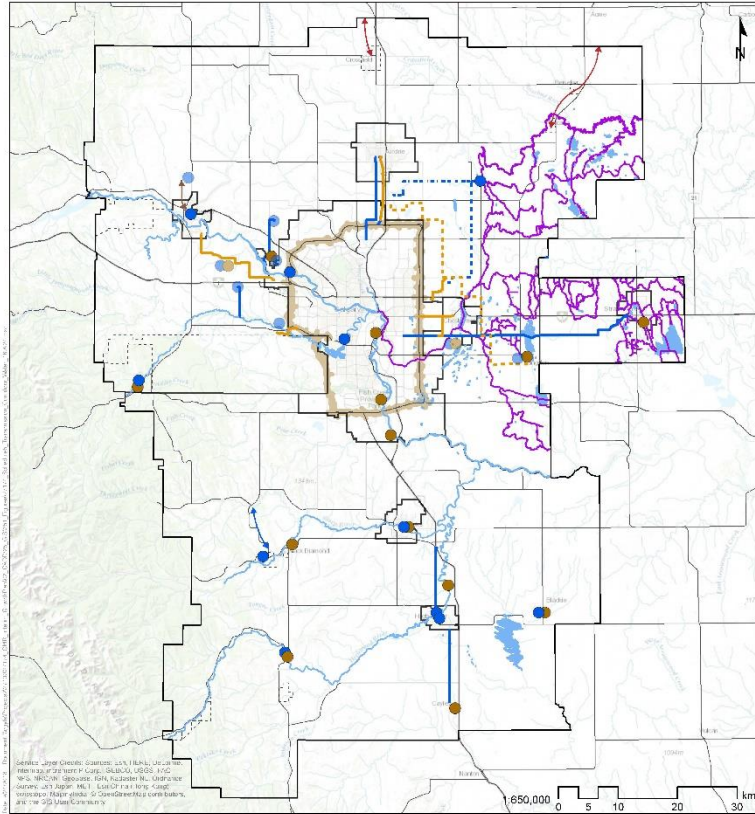


Current as of Sep-24/18

# Mobility Corridors – Transit and Active Transportation

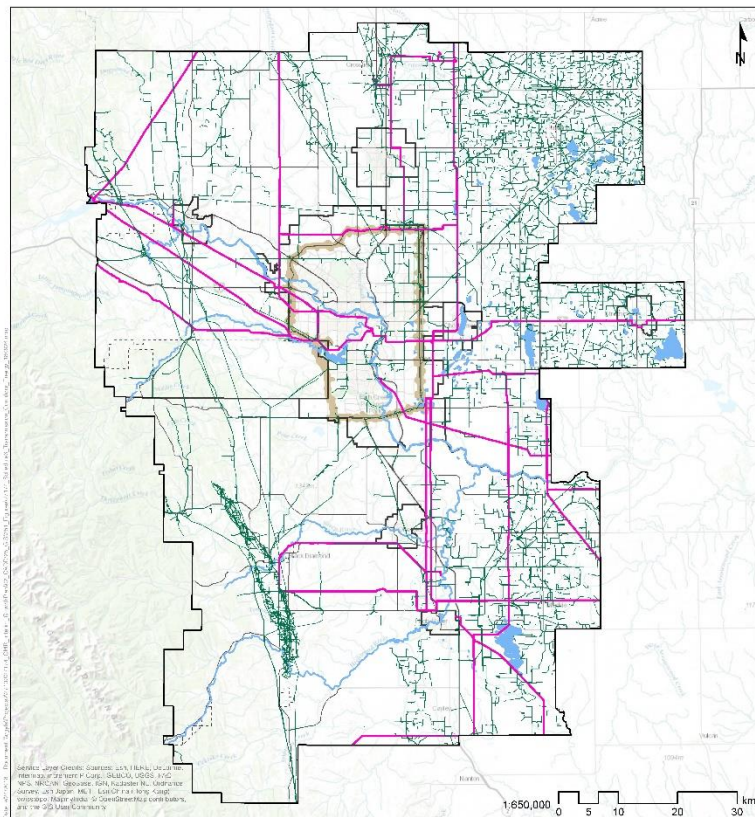
Includes transit corridors and regional pathways





# Transmission Corridors – Water

Includes intermunicipal water and wastewater servicing



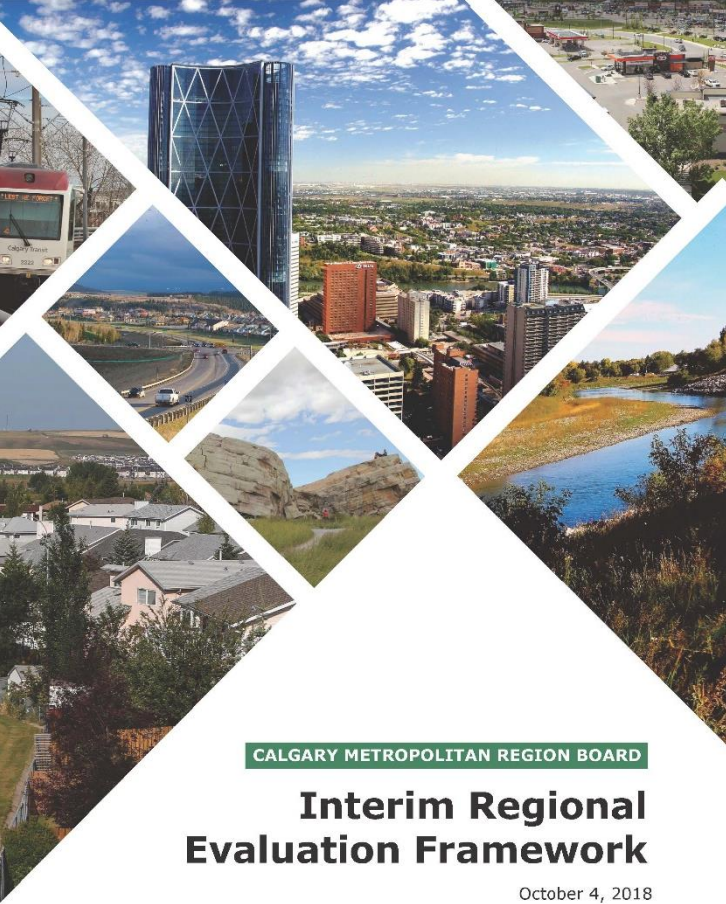
Calgary Metropolitan Region  
Interim Growth Plan



Current as of Sep-24/18

# Transmission Corridors – Energy

Includes the Transportation Utility Corridor and power and pipeline transmission



CALGARY METROPOLITAN REGION BOARD

## Interim Regional Evaluation Framework

October 4, 2018

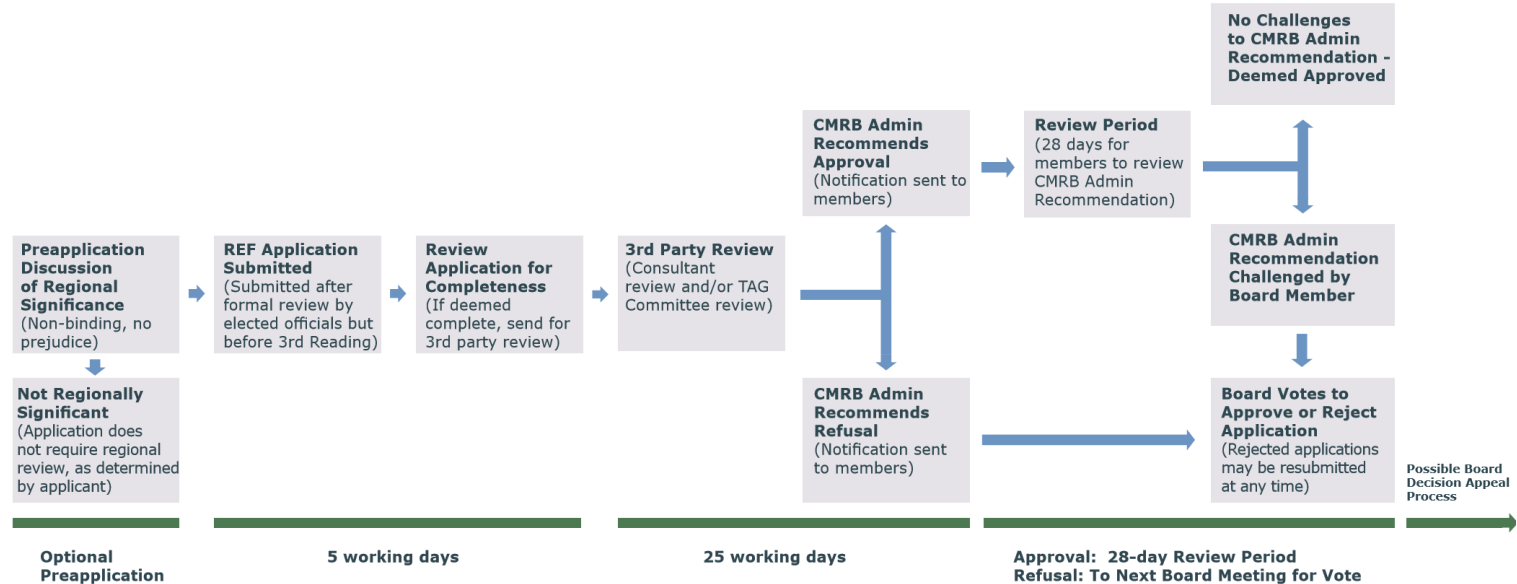


# IREF

---

- IREF is the objective evaluation and approval of statutory plans
- Includes ASPs, ARPs, IDPs, ASP and ARP amendments
  - Plans with more than 50 new dwelling units
  - Proposed employment areas
  - Any within 1.6 km of an adjacent municipality or a notification area, unless in an IDP
- Regional significance determined by municipalities
- IREF 2019-01 reviewed and recommended for approval

# IREF Application Review Process



# Growth and Servicing Plans

- To be delivered to the Minister no later than December 31, 2020
- Vehicles to enact the vision and priorities of the Board
- Growth Plan must be reviewed every 10 years
- Servicing Plan must be reviewed every 5 years
- Regulatory requirements of what **MUST** be in the Growth Plan, but flexibility in how these requirements are met



# Growth Plan

A comprehensive, integrated regional land-use plan for the CMR must include:

- population and employment projections;
- the identification of
  - growth areas
  - land supply for residential, commercial and industrial purposes,
  - agricultural lands,
  - density of development,
  - the development and location of infrastructure
  - corridors for recreation, transportation, energy transmission, utilities and intermunicipal transit

# Growth Plan

Must include policies regarding:

- planning for corridors for recreation, transportation, energy transmission, utilities and intermunicipal transit;
- environmentally sensitive areas;
- coordination of infrastructure planning and development among the participating municipalities;
- new settlement areas;
- intensification of existing settlement areas;
- conservation of agricultural lands;
- specific actions to implement the Growth Plan.

# Servicing Plan

- Servicing Plan must support the development outlined in the Growth Plan and may include
  - Transportation, including regional transit
  - Water, waste water and storm water
  - Solid waste
  - Emergency services,
  - Recreation, and
  - Any other services, identified by the board which benefit residents in more than one of the municipalities that are parties to the Servicing Plan.

# Current Activities

- Building a common set facts and knowledge in areas that matter most to the Board
  - Focus on "region building"
  - Developing a vision for the Board
- Municipal Administration technical advisory groups for: agriculture, data and analytics, land use, recreation, transit, transportation, water

# Current Activities

- RFP for Growth Planning Consultant
  - Close on June 5, 2019
- South and East Calgary Region Transportation Study
  - Targeted completion end of Q4, 2019
- Regional Employment Analysis
  - Targeted Completion September, 2019



# Current Activities

- Water Demand Management study
  - Targeted completion August, 2019
- Logical Extension of Water Servicing Study
  - Targeted Completion October, 2019
- Environmentally Sensitive Areas Study
  - Targeted Completion October, 2019

# What have we learned?

- The Region is an important unit of planning
- Key issues are regional in scale
  - Water scarcity
  - Efficient use of land, growth areas
  - Cost-effective service implementation
  - Business environment
  - Advocacy
- Members are aligned on fundamental issues

# Defining "Regional"

- Hierarchy of plans
  - Regional plans have a unique role
  - Focus on those systems that transcend municipal boundaries
  - Consider how regional considerations can be implemented through municipal planning tools
  - Respect unique character of municipalities

# Benefits

- Building a Region
  - Plans are the enactment of the vision of the Board
- Building agreement on a path forward
  - Members are able to learn from each other
  - Collaboration amongst elected officials builds key directions
  - Build a path out of Board and Committee values
  - Municipal experts are important strategic advisors

# Measuring Success

- Understanding the effects policies is critical to success of the Region
- Planning for how policies will be monitored shapes how policies are structured
  - Building a regional database takes time
  - Share data back to members over time, value added service
  - Moving towards public data sharing



# Thank you

---

Questions ?

