

# ALBERTA PLANNING EXCHANGE

The Newsletter of the  
Community Planning Association of Alberta



October 2007



## Board of Directors

### Chair

*Dr. Tim Burton*

### Vice-Chair: North

*Veronica Bliska*

### Vice-Chair: South

*Nick Paladino*

### Treasurer

*Bill Gillespie*

### Directors

*George Gehrke*

*Carolyn Kolebaba*

*Mark Oberg*

*Halyana Tataryn*

*Carla Semeniuk*

*Derril Butler*

*Gloria Wilkinson*

*Bob van Wegen*

### Student Directors

*Rose-Mary Damiani*

*Jonathan Schmidt*

### Secretary

*Vicki Hackl*

Tel: (780) 432-6387

Fax: (780) 452-7718

## In This Issue ...

Message From the Chair .....	Page 1
Words of Appreciation .....	2
Who Are We?.....	3
Why You Should Become a Member.....	4
2007 Conference Review.....	5
2007 Education Session Review.....	6
2007 Conference Scholarship Winners.....	7
2008 Conference Theme.....	8
2008 Conference - Relocation of Annual Conference.....	9
2008 Conference and Education Session – New Format.....	10
Proposed Undergraduate Degree in Planning at the University of Alberta.....	12
Board Involvement in the Provincial Land Use Land Use Framework.....	13

## Message From the Chair

### Tim Burton

This is a special edition of the Newsletter that we will be distributing widely – not simply to our members, but to all Alberta municipalities, to various other groups and organizations, and to individuals interested and involved in community planning. We want to make ourselves known more widely throughout the province. We also want to draw attention to what we do and the benefits of membership.

Having said that, there remains a great deal of information in the Newsletter for our current members, as well as for those who may become interested in joining us in our activities.

For several years now, we have collected formal evaluations of our Annual Conference, as well as both formal and informal comments and suggestions about the content and structure of the Education Session. Also, like so many organizations in the province, we have become ever more concerned about the escalating costs of convening the annual Conference and Education Session. As a result, the Board has spent considerable time reviewing the structure and format of both events, leading to a re-structuring that, we believe, will greatly enhance the quality of each event for delegates while also containing costs. Details will be found in separate articles in the Newsletter.

The CPAA Board is made up of volunteers who give generously of their time and expertise. Over the past two years, they have been heavily engaged: in revising our Bylaws: re-structuring our governance process through the development of new working Committees: re-locating the Association's office and revising its operations: and, most recently, re-examining and re-structuring the Conference and Education Session. On behalf of our members, I want to thank all of the recent and current Directors for their dedication to this major overhaul of what we do and how we do it.

## WORDS OF APPRECIATION

### Tim Burton

At the Annual General Meeting last April, we said goodbye to three Directors who have retired from the Board.

- Don Schultz stepped down after six years of service. While actively involved in all of the Board's work, he will be remembered especially for his recurring leadership in the organization of the Association's annual *Education Session*.
- Although he was with the Board for only a couple of years, Doug Parrish served as our Treasurer and was instrumental in helping the Board through a difficult period of re-organization in 2005 and 2006.
- Lesley Kalmakoff, a Student Director for the past two years, proved to be a highly successful link between the Board and our student volunteers. Lesley worked hard and successfully at promoting student involvement in the work of the Association.

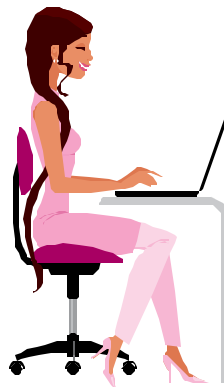
On behalf of the Board and our members, I want to thank each of them for their contributions.

The three new Board members who were elected to take the places of our retiring members are:

- Derril Butler, Reeve of Lac Ste. Anne County, a regular and active participant at CPAA Conferences in recent years.
- Bob van Wegen, Community Planner at the Federation of Calgary Communities, with responsibility for representation of community interests in planning and planning-related matters within the City.
- Jonathan Schmidt (Student Director), a graduate student in urban and regional planning at the University of Calgary's Faculty of Environmental Design, with interests in planning policies that address the urban-rural fringe.

On behalf of CPAA, I welcome our new Board members and look forward to working with them over the next several years.

Finally, the Board would like to recognize the contributions to the Association of our Secretary, Vicki Hackl. Although she has been with us for only just over a year, Vicki's organizing skills, efficiency and personality are already having a stimulating effect on our activities and operations.



## WHO ARE WE?

### Tim Burton

The Community Planning Association of Alberta (CPAA) is the last survivor of the Community Planning Association of Canada (CPAC) and its network of Provincial Chapters formed in the 1950s with the support of the (then) Central Mortgage and Housing Corporation. At its peak, CPAC had thousands of members, with national conferences drawing hundreds of delegates. Its purpose was to bring together in discussion and debate many diverse groups interested and involved in community planning: professional planners, elected officials, administrators, community organizations, residents of communities of every type and size, and planning educators.

For more than a decade the CPAC and its Provincial Chapters thrived. However, the withdrawal of CMHC funding support in the 1970s precipitated an accelerating decline that saw the national association and most Provincial Chapters disband or simply cease to function. By the end of the 1970s, the Alberta Chapter was one of a handful remaining in existence – and the only one still actively engaged in fostering debate on community planning issues among the diverse groups involved in and affected by planning decisions.

In 1979, the Alberta Chapter was re-constituted as the Community Planning Association of Alberta (CPAA) and incorporated as an Alberta not-for-profit association. Its mission is to provide opportunities to share, promote and encourage sound community planning among all stakeholders in the planning process. Its membership is drawn from among elected officials, municipal and provincial administrators, professional planners, planning educators and students, other planning-related professionals (e.g. architects), developers and realtors, representatives of community organizations, and citizens at large.

The CPAA is governed by a Board of 12 Directors elected for three-year terms (four elected each year), together with two Student Directors (each elected annually). The current Board consists of four municipal Councillors, three professional planners, three community representatives, one retired professional planner, one retired planning educator, and two students from the University of Calgary's Graduate Planning Program. The Association's office is located in Edmonton and is staffed by a part-time Secretary.

In keeping with its mission, the CPAA has organized an annual Conference and Education Session for more than a quarter century. Conference themes in recent years have included *Planning People-Friendly Places* (2007), *Alberta – the Next Fifty Years: Masters of Our Own Destiny* (2006), *Community Planning: Economic Opportunities, Fiscal Challenges* (2005), and *Servicing Our Communities and Regions: Opportunities, Processes and Partnerships* (2004). As well, we publish a Newsletter (the *Alberta Planning Exchange*) three or four times a year; maintain a website ([www.cpaa.biz](http://www.cpaa.biz)) with information about planning matters and links to other planning and planning-related organizations; offer scholarships for students enrolled in planning programs at Alberta universities; and participate in a variety of provincial planning activities on behalf of our members (currently, for example, two Board members are serving on Working Groups of the Provincial *Land Use Framework*).

## WHY YOU SHOULD BECOME A MEMBER

### Veronica Bliska and Tim Burton

Whether you are an individual, a municipality or other organization, there are substantial benefits to being a member of the Community Planning Association of Alberta (CPAA).

The CPAA is the only planning organization in Alberta (and, indeed, in Canada) **whose principal purpose is to serve** non-technical and non-professional people involved in the planning process and affected by planning decisions: municipal Councillors, members of community organizations, developers and realtors, and members of the general public. We do this by bringing these groups in contact with planning professionals and educators and by providing opportunities for them to learn from each others planning experiences.

Our *Newsletter* frequently provides information about developments in community planning, planning legislation, and planning practice. Our February 2007 edition, for example, included a synopsis of the outcome of a recent legal challenge by the Urban Development Institute (Alberta) to the City of Leduc's *Off-Site Levy Bylaw*. The Court of Queen's Bench ruled in favour of the City, and the synopsis provides valuable information for other municipalities considering implementation of a similar bylaw.

The August 2006 edition of the Newsletter included a synopsis of the presentation on *Communities and Conservation* given by the renowned writer Randall Arendt at a meeting in the MD of Rocky View. Several Newsletters in recent years have included essays written by CPAA scholarship winners on various aspects of planning practice. And this current Newsletter includes an update on the activities of Working Groups of the Provincial *Land Use Framework*, based on the involvement of two of our Directors.

Participation in our *Annual Conference* and the accompanying *Education Session* are two other ways of learning about developments in community planning – and although anyone may attend, members gain a significant financial advantage in Registration Fees. As noted in another article in this Newsletter, an Individual Member can recover the entire cost of Membership through the differential between Member and Non-member Registration Fees for the Conference. Group Members can recover their membership fees if two representatives attend both the Conference and the Education Session.

Recent Conferences have included sessions on *Housing Choices: Barriers and Opportunities* (2007), *New Models of Public Involvement* (2007), *Sustainable Planning for Parks and Open Spaces* (2006), and *Land- Alberta's Last Best Sustainable Resource* (2006). Past Education Sessions have focussed on such topics as *Mediation in Planning Disputes* (1999), *Sustaining Community Engagement* (2003), and *Consultation, NIMBY, and Community Sustainability* (2006). There are, then, both substantive and financial benefits to be gained from membership. If you or your municipality/organization are not already a member, we encourage you to join now. A membership application form is enclosed with this Newsletter. If you join now, we will make your membership valid through to December 2008.

## 2007 CONFERENCE REVIEW

### Tim Burton

The Association's 2007 Conference, *Planning People-Friendly Places*, was held at the Capri Centre in Red Deer, April 2<sup>nd</sup> through 4<sup>th</sup>, and was distinguished for several reasons. First, there was the weather – a late blast of winter dumping large amounts of snow through much of Alberta made travel to the conference time-consuming and, even, hazardous. Despite this, attendance was strong – about 200, including speakers.

Evaluations were completed by about one-third of the delegates and were extremely positive about the Conference sessions, speakers, organization and services.

Mary-Frances Turner, Executive Vice-President of the York Region Rapid Transit Corporation and former Commissioner of Development Services for the Town of Markham (where she directed the planning and implementation of the international award-winning Markham Town Centre), got the conference off to a vibrant start with her opening address on the *Art of Creating People Places*. The standard she set was subsequently matched by all of our Plenary Session speakers. All three Plenary Sessions, as well as the Question-and-Answer Panel, were rated *Good* or *Very Good* by 90% or more of those completing evaluation forms.

The absolute numbers commenting on each of the Concurrent Sessions were inevitably fewer – but even these sessions were rated highly: the worst had 68% of evaluations rating it as *Good* or *Very Good*, while the best was rated this way by 96%. The Reception, Luncheon and Banquet were also thoroughly appreciated - with 84%, 91% and 98% approval ratings, respectively. Overall, the 2007 Conference was very successful, with ratings of *Good* and *Very Good* dominant for every item evaluated. It appears that the great majority of delegates left with positive feelings about their experiences – notwithstanding the wintry weather!

In closing, I would like to pay special tribute to three groups of people and organizations that were instrumental in contributing to the success of the Conference.

- Donors to our Silent Auction were once again unstinting in their support for our activities. The Auction raised \$3,784 for student scholarships and for the Association's educational activities.
- Our sponsors continue to be extremely generous in their support. Sponsorships are the principal way in which we have been able to keep the costs of Conference registration at bargain prices for the last several years! Costs rose substantially in 2007, but we were able to hold Conference registration fees unchanged from the previous year – due, in large measure, to the support of our sponsors.
- Finally, I wish to thank our speakers. As has so often been the case, we were blessed in 2007 with a group of outstanding speakers, all of whom gave their services without remuneration, asking reimbursement only for accommodation, travel and out-of-pocket expenses. Their commitment to the cause of community planning could not have been expressed more forcefully.

## 2007 EDUCATION SESSION REVIEW

### Gloria Wilkinson

Unlike the 2007 Conference, the 2007 Education Session was extremely disappointing – for both CPAA and for the many registered participants.

As in past years, we had designed a program that we thought would be both educational and stimulating. It consisted of four parts.

- A NIMBY workshop, Part 11 to be presented by Vince Bhardwaj, a knowledgeable and experienced staff member from CMHC.
- A presentation by Dr. Bev Sandalak and students from the University of Calgary's Faculty of Environmental Design about a program called *People Plus Place*.
- A presentation by a developer, Glen Lyons, intended to de-mystify the development industry and process.
- Scenarios and a workshop that would enable participants to explore some of the implications of the three presentations through examples and discussion.

The presenters had agreed to provide their own materials, with a Workbook to be produced and distributed by the participants from *People Plus Place*.

Unfortunately, events conspired against us. Things started to go wrong when the developer informed us a week before the Session that he would be unable to participate.

Problems escalated when Vince Bhardwaj was obliged to withdraw. His replacement from CMHC, while well informed about NIMBY, was not fully aware of the purpose of our Education Session and did not know that the intent was to build upon NIMBY presentations given in previous years. Thus, while his presentation contained valuable material, it repeated much of what participants had learned at previous Education Sessions.

Then, to cap it all, Dr. Sandalack telephoned on the morning of the day the Education Session was to occur to say that she was stuck in the spring snowstorm and would be unable to attend. She did e-mail a small number of her slides enabling some material to be presented on her behalf – though this was necessarily very limited. Worse still, the Workbooks were in her possession and could not, therefore, be given to delegates!

In the circumstances, the Directors involved worked mightily to present a Session at all! Inevitably, what was presented was far below participants' expectations – and, indeed, our own! For the first time since the Education Session began, we were unable to produce much of what was promised.

The Board of Directors apologizes to all participants in the Education Session. They have come to expect a high quality program from us – one that we simply did not provide on this occasion. We can only assure our members that we have learned from this experience. There will always be late withdrawals by speakers: it is a fact of life about Conferences and Workshops. However, we intend to work hard to ensure that we have suitable contingencies in place in the future.

## CPAA 2007 CONFERENCE SCHOLARSHIP WINNERS

### Gloria Wilkinson

Each year students attending the Annual Conference are invited to submit a short essay outlining the nature of their experiences and discussing their perceptions of papers presented at the Conference. A Panel of Directors from the Scholarships and Awards Committee judges the submissions.

The Board congratulates Titania Lam and Jonathan Schmidt, both of whom have been awarded a \$500 Scholarship for their submissions on the 2007 Conference.

Members of the Scholarships and Awards Committee for 2007-2008 are: Mark Oberg, Bob van Wegen and Gloria Wilkinson.

Members of the Board are also delighted to note that, subsequent to receipt of his award, Jonathan Schmidt was elected as a Student Director of CPAA.



## BOARD APPROVES 2008 CONFERENCE THEME

### Nick Paladino

The CPAA Board of Directors began work on the 2008 Conference at its first meeting after the 2007 Conference ended. A Conference and Education Committee was established at the May 25<sup>th</sup> Board Meeting and immediately set about developing the theme and content for next year's conference.

Before deciding on a theme, we examined the comments and suggestions made by members during the Annual General Meeting last April as well as the delegates' evaluations submitted at the end of the 2007 Conference. The Board spent a considerable time discussing the details of these at its May 25<sup>th</sup> Meeting. We noted that many of the comments, suggestions and requests revolved around the topics of inter-municipal relations, annexations, joint planning, development credits, and so on. We also learned that multi-jurisdictional planning and cooperative regional planning are currently issues of major concern among many members of both the Alberta Urban Municipalities Association (AUMA) and the Alberta Association of Municipal Districts and Counties (AAMDC).

With that in mind, the Conference and Education Committee proposed the theme of ***Planning Regionally – Planning Reasonably*** to the Board at its meeting on September 21<sup>st</sup>. The Board accepted the recommendation and the Committee has now begun to flesh out the details. Sessions and speakers will focus on inter-municipal issues and opportunities, lessons learned from problems encountered in past joint municipal and regional planning efforts, and experiences from current voluntary cooperative planning activities. We believe this is a timely theme and will be welcomed by many of our members. It will also be a valuable learning opportunity for newly elected municipal Councillors.

The following Directors are members of the *2008 Conference and Education Committee*: Derril Butler, Rose-Mary Damiani, Bill Gillespie, Nick Paladino and Carla Semeniuk. The Board Chair, Dr. Tim Burton, is an ex-officio member of the Committee.

Further details about the Conference organization and content will be made available in our next Newsletter, currently scheduled for late November/early December and will be posted on the web site as well.



## RELOCATION OF THE ANNUAL CONFERENCE FOR 2008

### Tim Burton and George Gehrke

The CPAA Annual Conference has been held at the Capri Centre in Red Deer for the past 20 years. While services at the Centre have generally been good, the costs of holding the event have risen steeply during the past couple of years. Between 2006 and 2007 alone, our total costs at the Capri Centre rose by 22 per cent. In October 2006, we attempted to negotiate some of the more substantial costs, but were told that they were not negotiable. This position was reiterated earlier this year.

In light of this, the Board agreed at its meeting of May 25<sup>th</sup> to investigate options at other hotels in Red Deer. (It was decided to remain in Red Deer because formal and informal evaluations over the years have determined that this is the preferred location for a large majority of our delegates.)

A small working group examined three hotels in the city: the Capri Centre, the Black Knight Inn, and the Red Deer Lodge. Cost quotations from the latter two hotels were compared with 2007 costs at the Capri Centre on four dimensions:

- Meeting/Function Room rental costs.
- Guest room rates.
- Costs of audiovisual and equipment rentals.
- Service charges on food and beverage sales.

The Working Group also made visits to the Black Knight Inn and the Red Deer Lodge.

A report outlining cost comparisons and the group's on-site observations of hotel operations at the Black Knight Inn and the Red Deer Lodge was forwarded to the Board on June 28<sup>th</sup>, with the recommendation that the 2008 Conference be moved to the Black Knight Inn. The Board accepted the recommendation, and a contract was completed with the Black Knight Inn during July. It is estimated that the move will save about 15% over our 2007 costs. Guest room rates will also be lower.

There is one minor drawback to this move. The Black Knight Inn has only 99 guest rooms. Analysis of past attendance suggests that we will need more rooms than this – particularly on our busiest day, the Tuesday, when we will likely need 125-130 rooms. However, the Holiday Inn Express and the Sandman Inn are both within one or two minutes walking distance from the Black Knight Inn. Plans are underway to retain rooms at both of these hotels. On the positive side, guest room rates will be somewhat lower than in the past. As well, we will have the entire hotel for our conference and are confident that this will enhance the quality of service we will receive.

At this time, our commitment to the Black Knight Inn is for 2008 only. We will evaluate the experience after the event and intend to include a form for evaluation of the hotel and its services in all delegates' conference materials.



## **A NEW FORMAT FOR THE 2008 CONFERENCE AND EDUCATION SESSION**

### **Bill Gillespie and Tim Burton**

The Board has listened to comments of members, Conference delegates, and participants in the Education Session during the past four years. Based on these, and taking into account the escalating costs of mounting both the Conference and Education Session, we have made significant changes to the structure and format of the two events. We have done this without changing the combined length of the two events.

The principal change is a reduction in the Session (from one day to a half-day) and the expansion of the Conference (from one-and-a-half days to two days). Together, however, they will continue to start on a Monday morning and finish on a Wednesday at noon.

An outline of the two events will now be as follows:

- The Education Session will start at 9:00 a.m. on the Monday and will last a half-day only, finishing at noon, followed by a buffet lunch for participants. This will allow the Session to be more focussed and project-oriented.
- The Conference will commence at about 1:00 p.m. on the Monday, with the Opening Keynote Address followed by a set of three Concurrent Sessions. (All Concurrent Sessions will be expanded from 75 minutes to 90 minutes in length.) The Minister's Reception will continue to be held on the Monday evening.
- The program for Tuesday will remain as before, except that there will be no afternoon Plenary Session. Instead, the CPAA Annual General Meeting will take place in the afternoon. Thus, the Tuesday will consist of: a Plenary Session, a second set of three Concurrent Sessions, a Luncheon, a third set of Concurrent Sessions, the AGM, networking time, and the Banquet and Silent Auction.
- The program for Wednesday will consist of an expanded Question-and-Answer Panel session, and the Closing Plenary, with the conference ending at about noon.
- Overall, we will make more efficient use of the Education Session, while delegates to the Conference will have one additional Concurrent Session available to them and more networking and discussion time - both of which have been constant requests in evaluations from previous conferences. As well, we will have only one Plenary Session each day rather than two on the Tuesday.

The Education Session for this year's conference will be a half - day of interactive learning. It is meant for those who are new to the planning process and those who wish to expand their planning knowledge. The theme of this years Education session will be:

***Planning is a Process Back to the Basics***

## Conference and Education Session Fees

The Registration Fee for the *Education Session* will be reduced substantially as a result of its reduced length, while the Registration Fee for the *Conference* will be increased to reflect its greater length and to offset increases in the costs of convening the conference that we have experienced over the past several years. There will be no Early Registration Fee. Instead, there will be different Registration Fees for Members and Non-members.

Members who have participated in both events in the past will find that their combined Registration Fees will be lower than before. Members who participated in the Conference only will face an increase in Registration Fees - though they will have an additional set of Concurrent Sessions in the program.

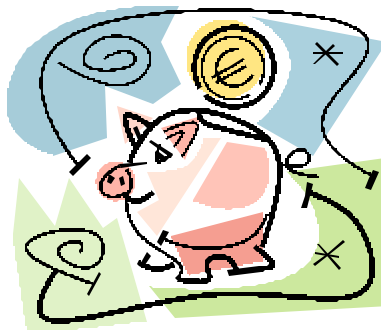
For 2008, the Board has approved a Member Registration Fee of \$75 for the *Education Session* and \$300 for the *Conference*. The combined total of \$375 is substantially lower than the \$450 charged for the two events in 2007. The fee for the Conference alone, however, is \$50 higher than a year ago, but includes the additional Concurrent Session noted earlier.

The Board has also approved a Non-member Registration Fee of \$100 for the *Education Session* and \$375 for the *Conference*, giving a combined total of \$475 for the two events.

The change to separate Member and Non-member Registration Fees will benefit the vast majority of our members who attend the Conference. Currently, the annual fee for an Individual Membership is \$60, while a Group Membership costs \$180.

With a differential of \$75 between the Member and Non-member Conference Registration Fees in 2008, an Individual Member attending Conference will recover more than the cost of membership.

A municipality or other organization with a Group Membership will recover the entire costs of its membership when it send two representatives to both the Education Session and the Conference, or when it sends three representatives to the Conference only.



## **PROPOSED UNDERGRADUATE DEGREE IN PLANNING AT THE UNIVERSITY OF ALBERTA**

### **Tim Burton**

CPAA members will be delighted to learn that a proposal for an accredited undergraduate degree program in Planning is under active development at the University of Alberta. Recognizing the need for a new generation of planners in the province, the program aims to provide students with " ...a comprehensive education in planning fundamentals, while at the same time offering a flexibility that allows students to focus upon specific areas of interest related to the profession." The proposal argues that an undergraduate program must "...balance theoretical and philosophical components with a strong education in the skills and practice of planning."

The proposal notes that there is a need for planners educated in Alberta who will have knowledge of local contexts in the province. An Alberta-based undergraduate planning program "...will produce planners trained in Alberta's legal, social, political and economic context ..." and should, therefore, reduce the time and training needed from employers to prepare them for entry-level positions.

The program will offer students a strong set of core planning courses supported by a breadth of options enabling them to tailor their interests towards individual specialties. A sample list of specialized programs that students would be enabled to follow includes:

- Rural Environmental Planning
- Urban Social Planning
- Economic Development
- Healthy Communities
- Planning for First Nations Communities
- Urban Land Use Planning
- Planning for Northern Communities

Each of these specialties will be supported by courses taken from across the university.

On May 25<sup>th</sup>, the CPAA Board voted unanimously to support the proposal - while offering several suggestions for its content and refinement! A letter to this end was forwarded to the University Department on May 26<sup>th</sup>. We look forward to keeping our members informed about the progress of the proposal, which the sponsoring Department hopes to fast track through the University and government review process.

Further information about the proposal can be obtained by contacting Dr. Theresa Garvin, Department of Earth and Atmospheric Sciences, University of Alberta, Edmonton, AB. T6G 2E3. (Tel: 780-492-4593; Email: [Theresa.Garvin@ualberta.ca](mailto:Theresa.Garvin@ualberta.ca)).

## BOARD INVOLVEMENT IN THE PROVINCIAL LAND USE FRAMEWORK

### Bill Gillespie

The Government of Alberta has undertaken a very important initiative called the *Land Use Framework* (LUF). In the opening statement of this initiative it was said: “*Alberta will be a very different place in 10 or 15 years. The challenge is to make sure it will be a better place to live.*”

Alberta Sustainable Resource Management is the lead Department in this endeavour. Public engagement was considered an important part of the preparation of a provincial land use framework and the Community Planning Association of Alberta has been part of this engagement. Public engagement was done in the following manner:

- Preparation of the ground: gathering baseline information to begin the work.
- Convening a provincial retreat based on the values and visions to be embedded in a comprehensive provincial land use framework.
- In light of this input, preparation of an initial land use framework.
- Conduct of a Provincial dialogue on the draft report.
- Release a final framework document.

The LUF is intended to identify an approach to managing public and private lands and resources that will help achieve Alberta’s long-term social and economic goals, based on a foundation of sound environmental management. When completed, the framework will provide an overall direction and decision-making framework to manage land use activities and address growth on Alberta’s land base. The LUF is intended to apply to public and private lands in Alberta, with the exception of federal lands such as national parks.

Four Working Groups will identify specific actions and strategies to achieve the proposed vision and outcomes for the LUF that have been developed through previous stages of the process. The four Groups are: Growth and Resource Management, Planning and Decision Making Process, Conservation and Stewardship, and Monitoring and Evaluation. Each of these has specific tasks to perform and each is responsible for presenting a report on proposed strategies and actions for its particular focus area on October 9, 2007.

The Community Planning Association of Alberta (CPAA) has played an active part in these Working Groups - specifically, through the involvement of two Board members. Veronica Bliska is a member of the Planning and Decision-Making Process Group, while Bill Gillespie is a member of the Monitoring and Evaluation Group. Both have been very active participants. There are also other CPAA members on working groups – for example, Doug Parish representing the City of Leduc. Veronica represents the M.D. of Peace and Bill represents the CPAA. We are privy to all working group reports and in some cases are able to review and report on these documents.

Veronica and Bill have prepared the following for your information concentrating on the Working Groups in which they are participants.

## Planning and Decision-Making

Strong land–use planning is required to make informed decisions on and for Alberta’s land base. The Planning and Decision–Making Working Group (PDMWG) concentrated on *how* decisions should be made rather than on *what* decisions should be made.

The PMDWG operated with questions posed by the Government of Alberta (GOA). These questions were grouped into 3 basic sets of issues:

- The ideal attributes of a planning and decision-making system for the LUF
- The potential role and form of regional entities
- The positioning of the LUF within the policy and administration of the GOA.

To do this, the Working Group took the position that “ the Alberta land base” includes air, water and land. Included are the wildlife, human populations, the resources that lie beneath, and everything that society needs wants and values.

A great deal of attention has been focused on the creation of a Regional Planning Capacity. New Regional Planning Authorities (RPA) would be planning bodies set up to draft regional plans, NOT decision-making bodies. RPAs would serve two purposes:

- To convey provincial land–use priorities and objectives downward to local communities
- To convey local preferences and practical approaches to the GOA.

It was emphasized that necessary financial support and planning expertise was paramount. Boundaries would reflect common interests. Compliance and dispute resolution was also touched upon, and more discussion in this area is needed to address the form that the process would take.

The goal of the Planning and Decision–Making Working Group is to provide the Government of Alberta with a report that identifies the *broad strategic direction* it wishes the GOA to adopt. It will encompass 4 or 5 important directions that need to be incorporated into the LUF. These would be points of strong consensus within the group.

Dr. Roger Gibbins, President and CEO of the Canada West Foundation, is the facilitator for this group and has done a superior job and collecting and disseminating the Group’s ideas. He has also been instrumental in consensus building within the group.

## Monitoring and Evaluation

The Monitoring and Evaluation Working Group was tasked to look at the following:

- Identification of land use indicators and natural resource indicators
- Identification of land information, monitoring, evaluation and assessment processes.
- Identification of appropriate continuous improvement processes for land use.

While other Groups consider aspects of the overall framework of the LUF, the role of the Monitoring, Evaluation and Reporting (MER) Group is to take three broad outcomes:

- Well Planned Places to live, work and play (Social)
- Sustainable Prosperity Supported by our Land and Natural Resources (Economic)
- Healthy Environment and Ecosystems (Environment)

And address three overarching questions:

- What should we measure?
- How should we measure it?
- How should the measured results be used in a continuous improvement process?

In order to address these questions, it is first necessary to clarify the purpose of monitoring, evaluation and reporting within the LUF. Given that the three broad outcomes above are what the LUF should enable us to achieve, the way in which we achieve these outcomes is through implementation of different plans and policies.

Monitoring, Evaluation and Reporting has an important role within any viable land use decision-making framework. The Group felt it imperative to describe a set of criteria used to develop its proposed framework. These are the broad principles that the Group felt must satisfy within the context of the Land Use Framework. They must be comprehensive, capable of guiding decision-making, understandable and forward looking. The criteria, the framework adopted by this Group is outcome-oriented. As a result, the framework structures Monitoring, Evaluation and Reporting around the outcome one is trying to achieve. This is done through the application of those attributes and indicators that will influence that outcome.

The group is led by Ken Shipley, facilitator, and Lynne Rach, recorder. They have done an excellent job of distilling the ideas of the group. Craig Aumann from the Alberta Research Council and a working group member should also be acknowledged. He has taken on the job of writing the Group's notes prepared by Lynne and developing a document that will be used in preparing our final report.

Briefly, here are the terms of reference for the other two Working Groups.

#### **Growth and Resource Management**

- Limiting or capping specific activities: increasing activities; directing activities to specific areas; priority land use: phasing activities over space and time
- Criteria for patterns, intensity and type
- Guidance in setting land objectives at different scales that are measurable and incorporate social, environmental, economic and cultural considerations

#### **Conservation and Stewardship**

- Involves the development of a stewardship and land ethic through encouraging innovation; incentives and disincentives; stewardship tools; education and awareness; capacity; evaluation/incorporation of ecological goods and services.

Veronica and Bill have been amazed at the cross-section of persons concerned with land use issues involved in the Working Groups. Also, there is a consensus among us that we want to make this a success. As a result, Working Group meetings are devoid of arguments about single issues that would deter Group progress and hinder the purpose of the exercise: to provide a workable Land Use Framework for all Albertans.

It is incumbent on the Government of Alberta to take the information given by all participants and provide the appropriate leadership to make Alberta's Land Use Framework a reality and a success.





Community Planning Association of Alberta  
 6807 – 104 Street  
 Edmonton, Alberta, T6H 2L5  
 Phone (780) 432-6387 Fax (780) 452-7718  
 E-mail: cpaa@cpaa.biz

## 2008 MEMBERSHIP APPLICATION FORM

Organization: (for <b>Group Membership</b> )					
Contact Name for group:					
Others in Group:					
Name: (for <b>Individual or Student Membership</b> )					
<b>CONTACT INFORMATION FOR All Types of Membership</b>					
Street Address:					
Location:		Province:		Postal Code:	
Phone:		Fax:		E-mail:	
<b>Type of Membership</b> (Please mark one box with "X")*					
<i>*memberships are valid from January 1 to December 31 each year* GST not applicable</i>					
Group (\$180/year):		Individual (\$60/year):		Student (\$25/year):	
Fees enclosed (please make cheques payable to the <b>Community Planning Association of Alberta</b> ). Credit card payment is not available.					
Invoice the above organization.					

[www.cpaa.biz](http://www.cpaa.biz)